

Overview

This high performance End Launch Connector is designed for 1.85mm V connector with low VSWR. It is easy to connect PCB, microstrip and coplanar lines.

Feature

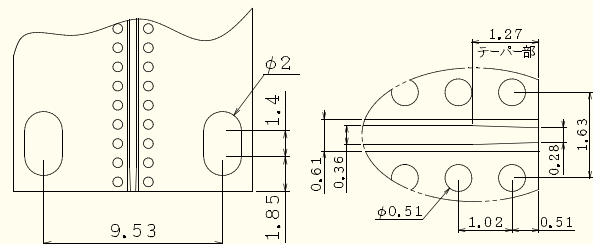
- DC to 60GHz high frequency PCB mounting connector.
- Solderless easy mounting with hex screws, easy repair and fast applying.
- PCB thickness up 0.28mm to 1.0mm.

Applications

High frequency measurement, Connections of high speed data-communication devices, optical component, and millimeter wave device and modules.

Product

Product Code : 01R0368-00

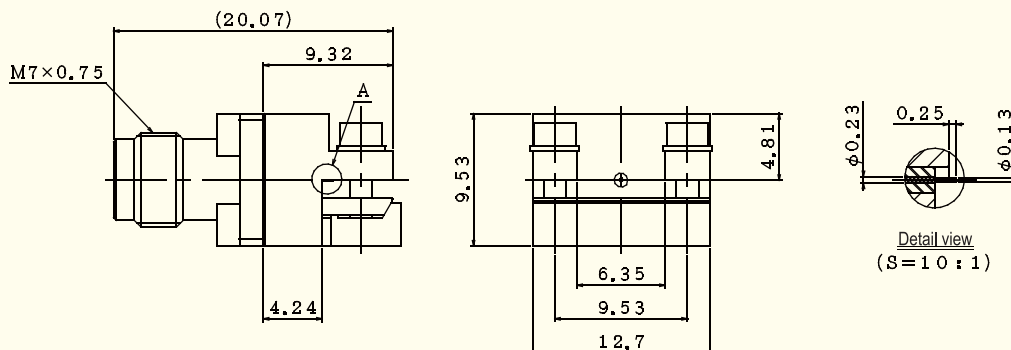


Recommended PCB pattern

PCB : Rogers RO4003C

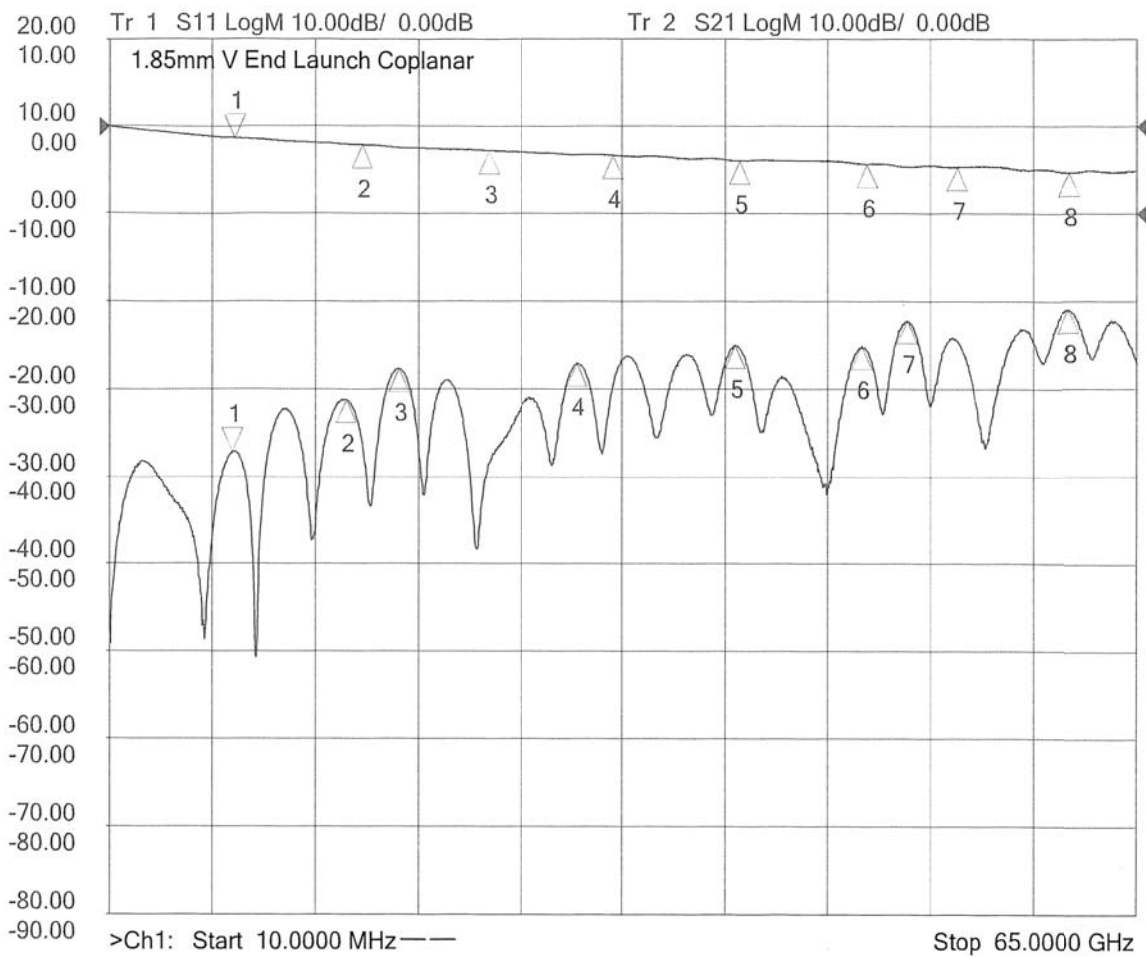
Detail view

Dimension



Detail view
(S=10:1)

▶ Reference data



- PCB : Rogers RO4003C
- Coplanarlin
- Thickness : 0.203mm (18µm/18µm)
- Length : 25.4mm