

► Overview

This high performance End Launch Connector is designed for 2.92mm K connector with low VSWR. It is easy to connect PCB, microstrip and coplanar lines.

► Feature

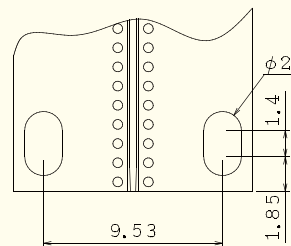
- DC to 40GHz high frequency PCB mounting connector.
- Solderless easy mounting with hex screws, easy repair and fast applying.
- PCB thickness up to 1.6mm.

► Applications

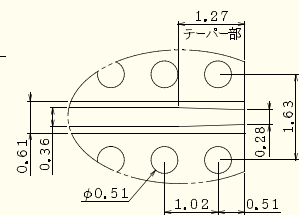
High frequency measurement, Connections of high speed data-communication devices, optical component, and millimeter wave device and modules.

► Product

Product Code : 01R0346-00

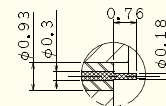
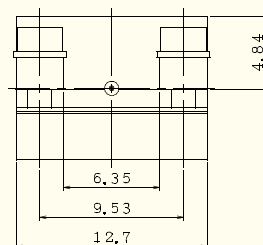
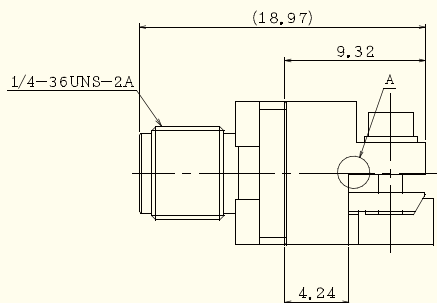


Recommended PCB pattern



Detail view

Dimension



Detail view
(S = 10 : 1)

► Reference data

